

HD 1080P New Pro Black Box Security Wi-Fi Camera With Rotatable Lens

User Manual

Version:Nov,2016



HAI2MP33CLOCKW

www.ozspy.com.au

Content

Quick Guide.....	P3
Overview.....	P4
Packing List.....	P4
Product Instruction (Square).....	P5
Product Instruction (Oval).....	P6
Clock Part Setting.....	P7
Camera Part Setting.....	P7
Camera name and password setting.....	P11
APP Introduction.....	P12
PC Setting(LAN).....	P14
PC Setting(WAN).....	P16
Specification.....	P17
FAQ.....	P17




Super Night Vision



Rotatable Lens by App

Quick guide of Wi-Fi camera function

1. Download Free App **Pro iCam** from App Store or Google Play.
2. Plug in power → Turn on device's backside ON/OFF button, wait for 2 minutes (Front blue light blink slowly);
3. Enter smartphone setting → Search and connect device's wifi named: YM....., wait till phone status bar appear Wi-Fi  symbol;
4. Enter APP, press top right "+" icon → Add new online camera → Search(LAN) → Select camera → Press Ok → Camera Online then;
TIPS: 1. Please select **【Change】** to change device password for security **【default: 8888】** ;
2. This step = P2P mode, can check video locally when without Wi-Fi.
5. Press gear icon after camera → Device Settings → WiFi Config → Select your Wi-Fi → Input password → Press Ok;
6. Quit APP, wait 30 seconds. Device will restart automatically and connect to your setted Wi-Fi (Front blue light always on then);
7. Enter APP to check live video locally or remotely anywhere.

P.S.: Contact local dealer for video guide setting up.

Overview

The HD 1080P Table Clock Security Wi-Fi Camera is a totally new design with BIG time display, firm housing table clock with an integrated smart & powerful 1080P Wi-Fi Camera.

First, it is a super simple table clock with time display only (12 /24 hour);

Second, it can be easily connected to Wi-Fi and watch live video, or remotely take photo and video by APP in smartphone anywhere in the world;

Third, it also supports Point to Point (P2P) function, connected by APP to smartphone for local live video without Wi-Fi.

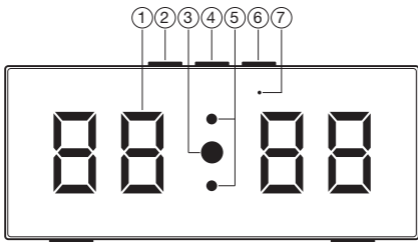
Third, the item also supports motion detect alarm function, cycle recording and works when charging.

Usages: Nanny camera, Home/ Shop/ Office/ Warehouse surveillance camera.

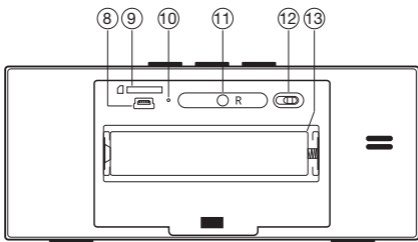
In the box

- 1x Table clock Wi-Fi camera
- 1x USB cable
- 1x AC power adapter
- 1x CD driver
- 1x User manual

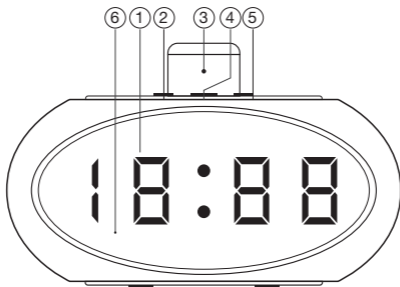
Product instruction



- ① Time display
- ② SET
- ③ Camera
- ④ UP
- ⑤ IR LED lights
- ⑥ DOWN
- ⑦ Wi-Fi indicator light



- ⑧ USB port
- ⑨ Micro SD card slot
- ⑩ Charging indicator light
- ⑪ Reset key
- ⑫ ON/OFF (For Wi-Fi Camera)
- ⑬ Battery



① Time display

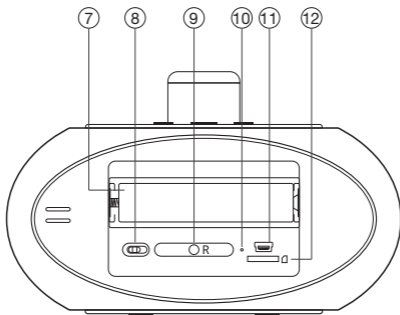
② SET

③ Camera

④ UP

⑤ IR LED lights

⑥ DOWN



⑦ Battery

⑧ ON/OFF (For Wi-Fi Camera)

⑨ Reset key

⑩ Charging indicator light

⑪ USB port

⑫ Micro SD card slot

Getting started of clock part

Open back cover, remove the protective seal from the battery and plug it into AC power using the included adapter; Time display will be lighted on (Back red light always on).

Press SET to set hour/minutes;
Press UP to set 12/24 hour format.

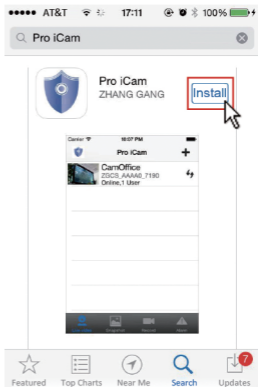
Getting started of Wi-Fi camera part

Step1: Download and install APP

Scan below QR code or search and download free APP named “**Pro iCam**” in Apple APP store, Google play or Electronic market, and install it.




[Pro iCam] APP QR code

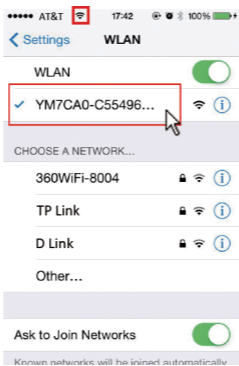


Step2: Connect power and turn on device

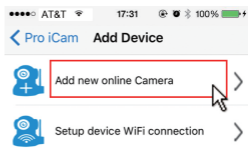
Remove the protective seal from the battery and plug it into AC power using the included adapter; Turn on backside switch, and wait for 2 minutes.
(Front blue light blink slowly.)

Step 3:Connect Wi-Fi

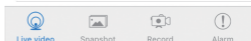
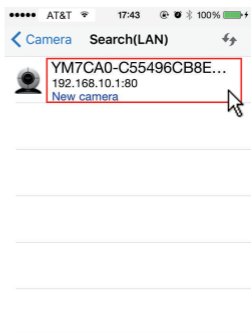
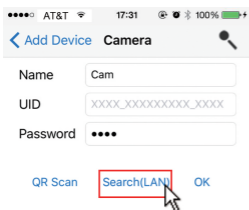
1. Open smartphone setting, search and connect mobile Wi-Fi to the device's wireless signal named "YM.....", wait Wi-Fi connected, and phone status bar appear Wi-Fi  symbol.



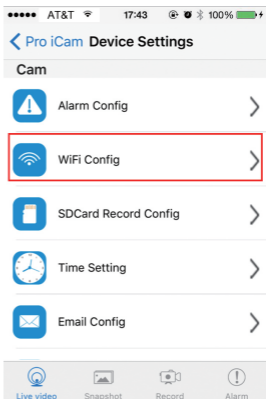
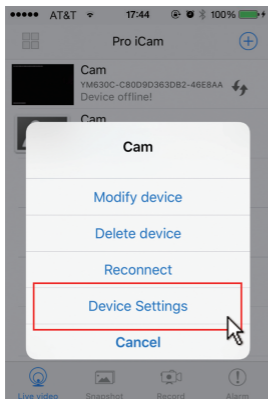
2. Open APP, press symbol + at the top right corner, select "Add new online camera"; Search for new camera and press ok. Then back to the first page to see the live video of camera and do the following setting.



- TIPS:** 1. Please select **【Change】** to change device password for security **【default: 8888】** ;
2. This step = P2P mode, can check video locally when without Wi-Fi.



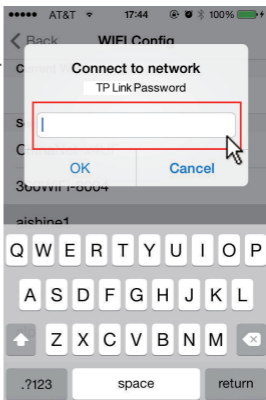
3. Press the gear icon  after the camera or long press the camera and select Device Settings, select Wi-Fi Config.




4. Select your Wi-Fi and input passcode, camera will be connected to your Wi-Fi. Your smartphone will disconnect the signal from device and connect to your Wi-Fi.

5. Quit APP, and device restart automatically and ready again in 30 seconds.

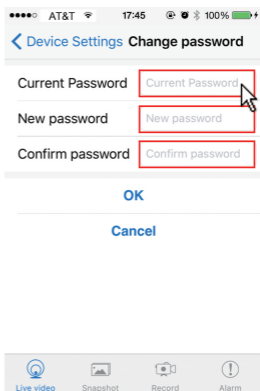
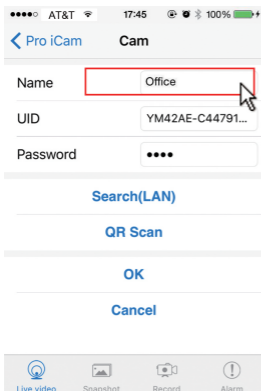
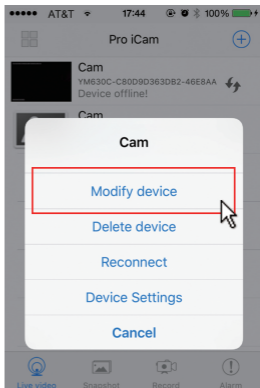
6. Enter APP and check live video locally or remotely anywhere.(Front blue light always on then).



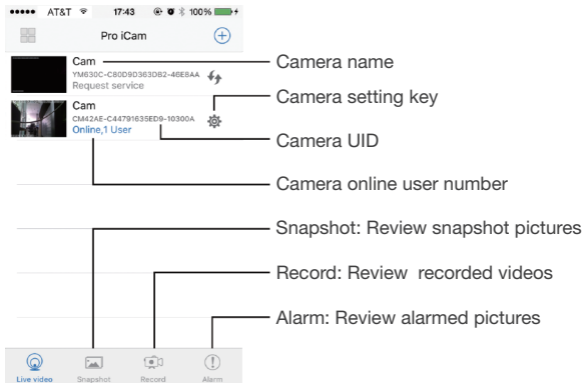
Set camera name and private code

Set name: Press the  after the camera or long press the camera, select Modify device, select Name and revise name like Office, Room.....

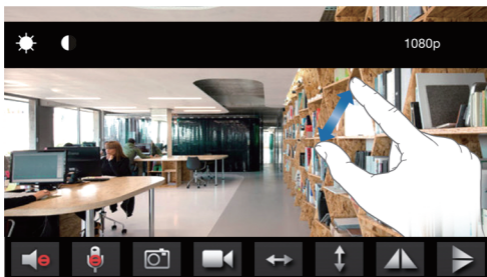
Set code: Long press the camera and select Device Settings, select Change password. Current one is 8888.



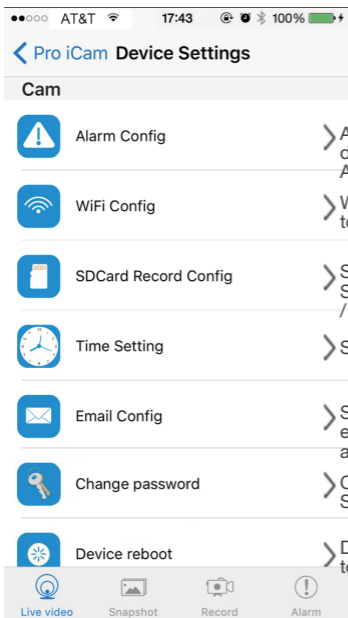
APP introduction



Live video page - Click camera to check



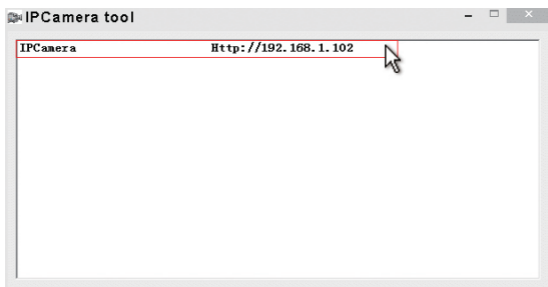
TIPS: Oval Camera, Slide left or right to rotate the lens



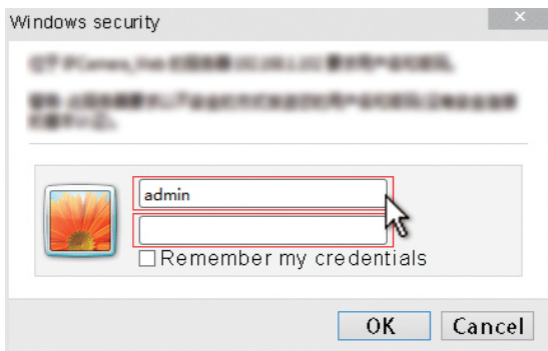
TIPS: Each setting in Device Settings, please scroll down and press ok to save the setting.


Set and watch by PC in LAN

1. Once camera connected well with Wi-Fi, install software “IPCamera” from included CD and open software to find the connected device’s IP address.



2. Double click the IP address, insert name “admin” (no password) and press ok.



3. After above steps, you can insert setting interface. For first use, please choose language, then click  to download and install plug-in.

IPCam | 2014

Ver 1.7.23.23 HD

Welcome to Use IP Camera



Browser plug-ins

Recommended browser plug-in, support for real-time video and audio playback, compatible with Windows platforms common browsers

3



iPhone, iPod touch and iPad



Mobile Phone (such as Android...)
Browser that supports Javascript.

2



IE ActiveX Plug-in. Click to download

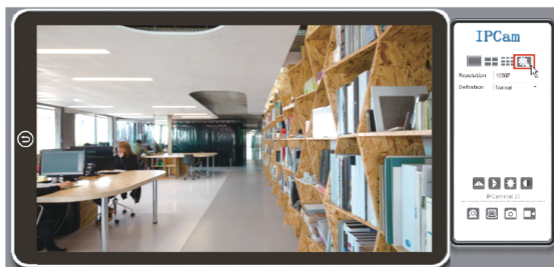
1



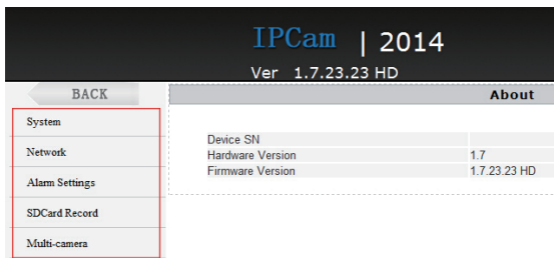
Language : English



4. Click  to go to the final setting interface.



5. Click left options to set other needed functions.



Set and watch by PC remotely (Not in LAN)

Please check details in included CD for instructions and software

Specification


Resolution	1 Mega CMOS
Video pixel in phone	Max 1920*1080
Video pixel in card	1080*720
Frames	Max 25fps
Compressed format	H.264
View angle	90°
Type of memory card	TF card>=Class 4/10 and HC marked
Maximum capacity of memory card	128GB
PC operation system	Windows 7, 8 / Mac OS X
Play software	VLCPlayer/SMPlayer
Mobile phone operation system	Android/iOS
Web browser	IE7 and above,chrome,firefox
Power consumption	300MA/3.7V
Recording	1 minute/ around 20MB
Working time	2-3 hours
Charging time	4-5 hours

Power adapter

5V / 2A

FAQ

- Q: Can working when charging for long time use?
 A: Yes, please use included 5V 2A adapter to plug in power for long time use (Back red light always on).
- Q: Time display is not stable, always blinking?
 A: It's with low battery, please charge it.

3. Q: Can't get device Wi-Fi signal? (Five solutions FYI).
A: 1). Please confirm the power adaptor connected;
2). Take out battery, then plug in power and wait 2 mins;
3). Press reset key for 5 seconds and wait 2 mins;
4). Turn off camera backside, then turn on again;
5). Turn off smartphone Wi-Fi for a while, then turn on to search again.
4. Q: Can't add or set camera after connected with camera Wi-Fi?
A: Please wait phone status bar appear Wi-Fi  symbol, then to do follow settings.
5. Q: Why live video screen shows up black and a searching circle spins in center but nothing ever displays?
A: 1). If camera's connected Wi-Fi speed is slow, please wait 10-30 seconds for live video appear;
2). One click middle of screen, select top right 480p resolution to check.
- TIPS:** If local Wi-Fi speed is slow, please choose lower resolution for good video and audio.
6. Q: Live video not smooth and clear?
A: Select suitable resolution according to the real time network environment.
7. Q: How many cameras can be added to APP?
A: No limit.

8. Q: How many visitors support to check live video?

A: 1-2


9. Q: Only 1 user, but show 2 or more users?

A: 1). If login in very often, last record is still in. If check every 2-5 mins, surely will be the exact numbers of users;

2). To be safer , please change camera's password when first use (Page 11).

10. Q: Motion detect set and alarm?

A: 1). Set motion detect sensitivity in Device Settings - Alarm Config, and scroll down press OK;

2). When motion detected, camera will push a alarm message to your phone and take 3 pictures for checking in the APP [Page 12 - Alarm - ].

Alarm

11. Q: Micro SD card instruction?

A: 1). Format card before inserting;

2). When backside switch is on, every time you insert micro SD card, it will record automatically;

3). Once connected, can set SD management in app [Advance Config - SD Card Record Config].

12. Q: How to play micro SD card video?

A:1). Use a card reader to read and play;

2). Use APP to play back [Page 12 - Record - ];

3). Play back in good speed network.

13. Q: After connected to Wi-Fi, how is the status of camera when Wi-Fi off?

- A: 1). If modem off, camera can still check local view as it is connected directly to wireless router;
2). If both modem and router off, camera will keep searching the connected Wi-Fi and connect again;
3). If above point 2, not connect; Just turn off and on backside switch again to connect Wi-Fi.

14. Q: Camera can't hold set Wi-Fi, lost contact and offline?

- A: 1). Make sure camera inside the range of good Wi-Fi signal;
2). Low battery, check if power adapter connected properly for long time use.
3). Make sure your phone network(4G/Wi-Fi) work well in remote area when checking the camera;
4). Please try to add with another phone which with good network.

15. Q: Forget camera password, or item goes abnormal?

- A: Turn on camera and wait for 2 minutes, press reset key around 5 seconds till front blue light off to restore factory default. Camera restarts and get ready again in 2 minutes.

16. Q: Connect camera with wifi by micro SD card setting?

- A: Steps: (Format micro SD card first.)
a, Create a txt file named wifi on the micro SD card

b, Input below format to the file

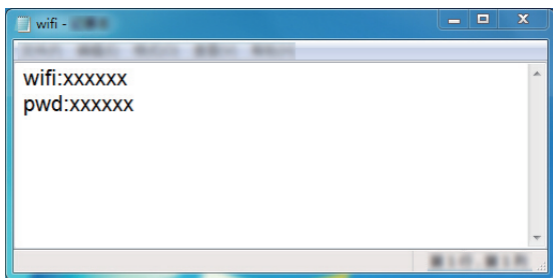
wifi:xxxxxx (Your local wifi name)

pwd:xxxxxx (Both are case-sensitive)

c, Insert the micro SD card when camera is OFF

d, Turn on camera, it will connect with your wifi in 10-15 seconds.

TIPS:Can also copy the txt file from camera's CD to the micro SD card,change wifi name and password.



17. Q: App content similar but not exact same as in manual?

A: App is always being optimized with better interface and functions.

18. Q: Any operation video demo of the camera for setting up?

A: Please contact local dealer for video guide.

The End!

